

# Model CB-S 260 | CO<sub>2</sub> incubators with hot air sterilization

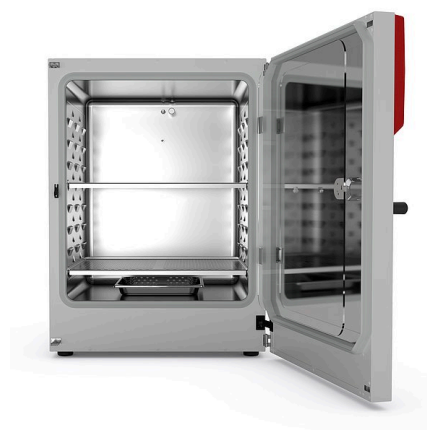
Series CB-S incubators are suitable for routine cell cultivation applications: They are free from contamination due to 180 °C hot-air sterilization and reliable pH stability thanks to the drift-free infrared CO<sub>2</sub> measurement system.

## BENEFITS

- Maximum usable space with minimal footprint and excellent ease of use
- Minimum risk of contamination thanks to uncompromising hot air sterilization
- Fanless, easy-to-clean hygienic interior without fixtures
- Simple and fast cleaning thanks to a seamless inner chamber



Model 260



Model 260

## MAIN FEATURES

- Temperature range: +6 °C above ambient temperature to +50 °C
- Humidity range: 90 to 95% RH
- CO<sub>2</sub> control range: 0 to 20 vol.% CO<sub>2</sub>
- Tried-and-tested anti-contamination concept with 180 °C hot air sterilization
- Humidification system with condensation protection
- CO<sub>2</sub> gas mixing jet with Venturi effect
- CO<sub>2</sub> sensor with infrared technology
- LCD to display temperature and CO<sub>2</sub> along with additional information and alarms
- Internal data logger, measured values can be read out in open format via USB
- Tightly fitted inner door made of safety glass
- Seamless stainless steel inner chamber
- Perforated shelves, stainless steel
- Troubleshooting system with visual and acoustic alarms
- Interfaces: Ethernet, USB, zero-voltage alarm contact
- Units can be stacked with CB models of the same size using a stacking adapter

## OPTIONAL EQUIPMENT

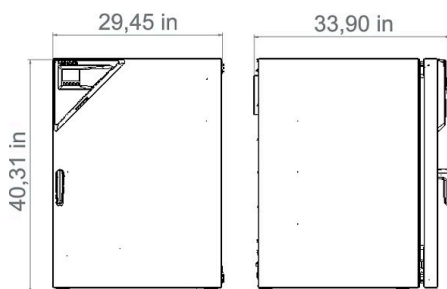
- Copper interior fittings consisting of copper shelves and copper-plated water pan
- Stacking adapter for secure, space-saving installation
- CO<sub>2</sub> gas tank changer for connecting two gas tanks to one or two incubators
- CO<sub>2</sub> shaker with corrosion-resistant components in a stainless-steel housing
- APT-COM Multi Management Software – for managing, recording, and documenting unit parameters
- Services – wide range of services to ensure that the unit functions correctly

## ORDERING INFORMATION

Interior volume [cu.ft.]	Voltage	Option model	Version	Art.-No.
9-4	200...230 V 1~ 50/60 Hz	Standard	CBS260-230V	9040-0191
	100...120 V 1~ 50/60 Hz	Standard	CBS260UL-120V	9040-0192

**TECHNICAL DATA**

Description	CBS260-230V	CBS260UL-120V
<b>Article Number</b>	<b>9040-0191</b>	<b>9040-0192</b>
<b>Performance Data Temperature</b>		
Temperature range +6 °C above ambient temperature to	50 °C	50 °C
Temperature variation at 37 °C [± K]	0.4	0.4
Temperature fluctuation at 37 °C [± K]	0.1	0.1
Recovery time after 30 seconds door open at 37 °C [min]	9	9
<b>Performance Data Climate</b>		
Humidity range [% RH]	90...95	90...95
<b>CO<sub>2</sub>-Data</b>		
CO <sub>2</sub> range [Vol.-% CO <sub>2</sub> ]	0...20	0...20
CO <sub>2</sub> measurement	IR	IR
CO <sub>2</sub> Recovery time after 30 seconds door open at 5 Vol.-% CO <sub>2</sub> [min]	5	5
<b>Electrical data</b>		
Rated Voltage [V]	200...230	100...120
Power frequency [Hz]	50/60	50/60
Nominal power [kW]	1.5	1.5
Unit fuse [A]	10	16
Phase (Nominal voltage)	1~	1~
<b>Measures</b>		
Interior volume [cu.ft.]	9.4	9.4
Net weight of the unit (empty) [lbs]	269	269
Permitted load [lbs]	88	88
Load per rack [lbs]	22	22
Wall clearance back [in]	3.94	3.94
Wall clearance sidewise [in]	1.97	1.97
<b>Internal Dimensions</b>		
Width [in]	24.43	24.43
Height [in]	29.55	29.55
Depth [in]	22.65	22.65
<b>Doors</b>		
Inner doors	1	1
Unit doors	1	1
<b>Housing dimensions not incl. fittings and connections</b>		
Width net [in]	29.16	29.16
Height net [in]	40.2	40.2
Depth net [in]	30.93	30.93
<b>Environment-specific data</b>		
Energy consumption at 37 °C [Wh/h]	55	55
Sound-pressure level [dB(A)]	41	41
<b>Fixtures</b>		
Number of shelves (std./max.)	2/8	2/8

**DIMENSIONS INCL. FITTINGS AND CONNECTIONS [MM]****OPTIONS**

Designation	Description	*	Art.-No.
<b>Calibration certificate, temperature</b>	temperature measurement incl. certificate and 27 measuring points at specified temperature	-	8012-1591
	back		
	30 mm	01	8012-1974
	for temperature and CO <sub>2</sub> values (outputs not adjustable)	02	8012-1977
	for temperature and CO <sub>2</sub> , temperature measurement in center of chamber, CO <sub>2</sub> measurement performed using test gas at 37 °C and 5 % CO <sub>2</sub>	-	8012-0228
	for temperature; for extending the measurement in center of chamber to include another test temperature	-	8012-1112
	left		
<b>Options/Accessories</b>	30 mm	01	8012-1975
	lockable door handle	-	8012-1014
	Measurement in center of chamber at specified temperature	-	8012-1131
	right		
	30 mm	01	8012-1976
	temperature measurement incl. certificate, 15- 18 measuring points at specified temperature	-	8012-1570
	temperature measurement incl. certificate, 9 measuring points at specified temperature	-	8012-1549
	Unit door and standard glass inner door with door hinged on the left	-	8012-1993

\* Notes &gt; See last page

**ACCESSORIES**

Designation	Description	*	Art.-No.
	Multi Management Software APT-COM™		
<b>Multi Management Software</b>	version 4, BASIC edition	19	9053-0039
	version 4, GLP edition	19	9053-0042
	version 4, PROFESSIONAL edition	19	9053-0040

\* Notes &gt; See last page

Designation	Description	*	Art.-No.
	Stainless steel	-	6004-0197
	concentrated, for gentle remove of residual contaminants; 1 kg	-	1002-0016
	external, BINDER Gas Supply Service, for connecting 2 gas tanks (CO <sub>2</sub> , N <sub>2</sub> or O <sub>2</sub> ), with audible and visual alarms, as well as zero-voltage alarm output	-	8012-0408
	for CO <sub>2</sub> , consisting of a gas tank pressure regulator with connection parts and 5-meter hose	-	8012-0014
	for equipment maintenance and disinfection, consisting of pH-neutral detergent (1000 g, concentrate), spray disinfectant (500 ml, ready-to-use solution), lint-free cleansing tissues, protective gloves, and protective glasses	-	8012-0503
	for the thermally isolated stacking of two BINDER CO <sub>2</sub> incubators	-	9051-0039
	IQ/OQ documents – supporting documents for validation performed by customers, consisting of: IQ/OQ checklists incl. calibration guide and comprehensive unit documentation; parameters: temperature, CO <sub>2</sub> , O <sub>2</sub> , pressure, depending on unit		
Options/Accessories	Digital in PDF format	-	7057-0001
	Hard copy inside folder	-	7007-0001
	IQ/OQ/PQ documents – supporting documents for validation performed by customers, according to customer requirements, PQ section added to qualification folder IQ/OQ; parameters: temperature, CO <sub>2</sub> , O <sub>2</sub> – or pressure, depending on unit		
	Digital in PDF format	-	7057-0005
	Hard copy inside folder	-	7007-0005
	set of 4 anti-slip feet, for safe stacking of units	-	8012-0702
	Shaker and controller connected via ribbon cable, universally applicable, 100 – 240 V, 50/60 Hz	-	8012-1771
	stable, vibration-free stacking frame on casters with locking brake for the safe stacking of two CO <sub>2</sub> incubators	-	9051-0041
	the base equipped with casters is used for the secure positioning and leveling of a BINDER CO <sub>2</sub> incubator	-	9051-0044

\* Notes › See last page

## SERVICES

Designation	Description	*	Art.-No.
<b>Installation services</b>			
Services	Unit function instructions for operation and programming of the controller	18	DL10-0500
	Unpacking and setting up of unit, connecting to existing connections, and checking function	13, 18	DL10-0100
<b>Preventive maintenance</b>			
Services	Executive of equipment inspection according to maintenance plan	14, 18	DL20-0400
<b>Calibration services</b>			
Services	CO <sub>2</sub> calibration at a specified value, measurements are taken with analyzed test gas at 5%, including certificate	14, 16, 17, 18	DL30-0401
	Expansion – including certificate, each additional measuring point in center of chamber at specified test temperature	14, 16, 17, 18	DL30-0102
	Temperature calibration with 1 measuring point in center of chamber at a specified test temperature, including certificate	14, 16, 17, 18	DL30-0101
	Temperature measurement with 18 measuring points at a specified test temperature, including certificate	14, 16, 17, 18	DL30-0118
	Temperature measurement with 27 measuring points at a specified test temperature, including certificate	14, 16, 17, 18	DL30-0127
	Temperature measurement with 9 measuring points at a specified test temperature, including certificate	14, 16, 17, 18	DL30-0109
<b>Validation services</b>			
Services	Execution of IQ/OQ in accordance with qualification folder	15, 18	DL41-0200
	Execution of IQ/OQ/PQ in accordance with qualification folder	15, 18	DL44-0500
<b>Warranty service</b>			
Services	The warranty is extended from 2 to 3 years from the delivery date, wear parts are excluded	-	DL02-0041
	The warranty is extended from 2 to 5 years from the delivery date, wear parts are excluded	-	DL02-0042

\* Notes › See last page

**NOTES**

- 01 Condensation may occur in the area around the access port. Access ports may be placed in custom locations for an additional charge.
- 02 UL mark is not granted when this option is used.
- 03 Heat resistant only to max. 200 °C.
- 04 Only available on units rated for 230 V.
- 07 The additional heat input may affect the temperature behavior.
- 09 Not in conjunction with the optional access port, door with window and interior lighting.
- 10 Not available on 23-liter units.
- 11 Not available on 23- or 53-liter units.
- 12 Only available on units rated for 230 V or 400 V.
- 13 Installation and connections take place at unit location; transport within the company only upon consultation.
- 14 We recommend a BINDER service contract to cover unit inspections, calibrations and validations.
- 15 OQ according to Yellow Paper = completed factory validation documentation of all OQ checklists.
- 16 Sensor calibration is performed in an accredited calibration laboratory.
- 17 Calibration is performed according to the BINDER factory standard.
- 18 Quoted prices do not include travel costs. Please refer to the chapter on BINDER Service for travel costs for your region. Quoted prices for services performed in Switzerland do not include a country-specific added fee (available on request).
- 19 For additional accessories, refer to the Process documentation chapter.

**BINDER GmbH**

Tuttlingen, Germany  
TEL +49 7462 2005 0  
FAX +49 7462 2005 100  
info@binder-world.com  
www.binder-world.com

**BINDER Asia Pacific (Hong Kong) Ltd.**

Kowloon, Hong Kong, P.R. China  
TEL +852 39070500  
FAX +852 39070507  
asia@binder-world.com  
www.binder-world.com

**Representative Office for CIS**

Moscow, Russia  
TEL +7 495 988 15 16  
FAX +7 495 988 15 17  
russia@binder-world.com  
www.binder-world.com

**BINDER Environmental Testing  
Equipment (Shanghai) Co., Ltd.**

Shanghai, P.R. China  
TEL +86 21 685 808 25  
FAX +86 21 685 808 29  
china@binder-world.com  
www.binder-world.com

**BINDER Inc.**

Bohemia, NY, USA  
TEL +1 631 224 4340  
FAX +1 631 224 4354  
usa@binder-world.com  
www.binder-world.us