

Cooled incubator with mechanical convection

The most versatile among the cooled incubators for microorganisms: The BINDER KB series cooled incubator controls temperature ranges of -5 °C to 100 °C. With its comprehensive program functions, this cooled incubator offers a wide range of capabilities and delivers reproducible test results.



Advantages:

- Safe and reproducible incubation
- Disinfection routine
- Broad range of products and applications

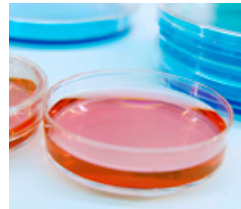
Areas of application:



Biotechnology



Food / Beverage



Microbiology



Plant / Insect Growth

- Electronically controlled APT.line™ preheating chamber and patented DCT™ refrigeration system assuring temperature accuracy and reproducible results in both heating and cooling situations
- Temperature range 0 °C to 100 °C (32 °F to 212 °F)
- MP controller with 2 programs with 10 sections each, alternatively switchable to 1 program with 20 sections
- Integrated week program timer with real-time function
 - Adjustable ramp function via program editor
 - Digital temperature setting with an accuracy of a tenth of a degree
 - Adjustable fan speed
 - Elapsed time indicator
- Independent adjustable temperature safety device class 3.1, providing full protection against chamber over-temperature, with visual and audible alarm
- Inner glass door
- RS 422 interface for communication software APT-COM™ DataControlSystem
- Adjustable intervals for printer
- Units up to 115 liters are stackable
- 2 shelves, stainless steel
- BINDER test confirmation

KB 23 (E3.1)

▶ Electrical data	
IP protection class acc. to EN 60529	IP 20
Voltage (± 10%) 50 / 60 Hz (V)	230
Voltage (± 10%) 60 Hz (V)	115
Nominal power (kW)	0.34
Energy consumption 3)	
at 37 °C (98.6 °F) (W)	60
Noise level (dB (A))	47

- 1) Lower values are valid up to an ambient temperature of max. 25 °C (77 °F).
- 2) To 98% of the set value
- 3) These values can be used for dimensioning air condition systems.

The useable interior height depends on the position of racks.

All technical data are specified for units with standard equipment at an ambient temperature of 25 °C (77 °F) and a line voltage fluctuation of ±10%. The temperature data is determined in accordance to factory standard following DIN 12880, respecting the recommended wall clearances of 10% of the height, width and depth of the inner chamber. All figures are typical average values for series devices. We reserve the right to alter technical specifications at any time.

